

design
make
play

SutcliffePlay

Waggon Lane
Upton Pontefract
West Yorkshire WF9 1JS
Telephone +44 (0) 1977 653200
Facsimile +44 (0) 1977 653222
info@sutcliffeplay.co.uk
www.sutcliffeplay.co.uk



Orchard - Willow OTU/OTW220

Installation Instructions

OTU/OTW220

Orchard Unit Installation Instructions

Installation of this type of equipment requires at least three people, and the use of a lifting tower or platform.

1. Read all instructions carefully before starting assembly.
2. Check using the parts list and fixing kit list that none of the components are missing. If any parts are missing contact our office.
3. Plan the final position of the play equipment ensuring there is sufficient space. See ground plan for recommended safety surface area and critical fall height to EN-1176.
4. Excavate the foundation holes in accordance with the ground plan. Orchard is designed to be installed onto a level site.
5. Fit the ground shoes OPA006 (for wet pour) / OPA007 (for loose fill) to the bottom of all posts but OTP202, using 3 x coach screws (M10 x 80). Each post is numbered, and marked with an 'X' on the bottom end.
6. Fit the rubber post caps to the top of each post using 3 x 50mm wood screws per cap.
7. Erect the main posts into the foundation holes using the ground plan for dimensions. Assembling decks and activities between the posts will help to brace it before it is concreted.
8. Assemble all activities and nets onto the posts in accordance with the assembly instructions in this document. Do not concrete the main legs until all the nets, panels, and other activities are fitted, as adjustments may be required.
9. Fit the pedestals to the steel slide and push spragging irons through them.
10. When all the activities are fitted and decks are levelled, fill the foundation holes to the required depth with concrete.
11. Do not allow the equipment to be used until the concrete has set (2-3 days) and the required safety surface has been installed.
12. Check that all fixing bolts are fully tightened.
13. When all fixings are secure, fill the 40mm diameter counterbores in the posts with the rubber bungs supplied.
14. Follow the maintenance instructions supplied.

NB: During installation, care must be taken to prevent hazards to children. If you are at all unsure or have any questions, please contact the contracts department immediately for their assistance and advice. Extra care should be taken if conditions are abnormal.

Tools Required

M10 Security screw torx fixing tool
Sockets for M16 bolts
Sockets for M10 bolts
Digging Implements

OTU/OTW220

Orchard Unit Parts List & Fixing Kit

design
make
play
SutcliffePlay

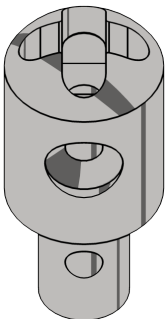
Ref	Description	Qty	NB: surplus '+' fixings are included in the kit to account for breakages and losses.		
OTU220F	Fixing Kit	1	→ OTU220F Fixing Kit List:		
OTP201	Post 201	2			
OTP202	Post 202	1	CHN005	Chain Adapter	10
OTP203	Post 203	1	CZS009BK	Nylon Bracket Cover	14+2
OTP204	Post 204	1	DZS005	Nylon Nut Cover	65+5
OTP205	Post 205	1	DZS007	Nylon Fixing Covers	36+2
OTP206	Post 206	1	DZS009	Step Washer	65
OTP208	Post 208	1	FIX125	M6x25 Security Bolt	10
OTP209	Post 209	1	FIX159	M10x40 Security Bolt	2
OTP211	Post 211	1	HHB534	M10x90 Hex Bolt	4
OTP241	Post 241	1	HHB542	M10x110 Hex Bolt	2
OTP242	Post 242	1	HHB555	M10x150 Hex Bolt	6
ORM004	Ladder	1	HHB770	M16x260 Hex Bolt	3
ORR200	Net	1	HSS522	M10x60 Hex Bolt	7
ORM003	Net Rail	1	HSS525	M10x50 Coach Screw	4
ORM005	Climbing Wall Bracket	7	HSS530	M10x80 Coach Screw	89+1
ORP005	HPL Climbing Panel	1	HSS550	M10x100 Coach Screw	37
ORP006	Hex Climbing Panel	1	LKN320	M10 Nyloc Nut	54+1
DZA106	Climbing Grips	13	LKN340	M16 Nyloc Nut	10
ORM001	Deck 'T' Rail	4	MCS107	M6x20 Button Head	14
ORA202	Deck Support Rail	5	MCS321	M10x35 Countersink	18
ORP026	Hex Round Deck	1	MCS326	M10x40 Countersink	10
ORP002	Hex Oval Deck	1	MCS355	M10x65 Countersink	2
ORP003	Traverse Leaf Decks	2	MCS361	M10x75 Countersink	11
ORP008	Traverse Leaf Panels	2	MCS400	M6x25 Countersink	10
ORA212	Traverse Support Rails	2	MSL003	300mm Spragging Irons	2
ORR205	Traverse Ropes	2	ORS001	Post Rubber Spacer	6
ORA206	Peg Climber	1	ORS002	Post Rubber Bung	19+2
ORM007	Seat Support Rail	1	ORS005	Metal Spacer Insert	3
ORP007	Oval Leaf Seat Panel	1	ORS017ZP	M16 Rope Fixing	7
ORM020	Slide Entrance Barrier	1	PZS001	Plastic Base	36
PZS240	Stainless Slide	1	STS060	1.1/4" Self Tap Screw	72+3
ORM011	435mm Bracing Rail	1	WDS450	2" Wood Screw	39+6
DZA652	Leaf Step Bracket	3	WSR034	M16 Washer	13+3
ORP004	Leaf Step Panel	3	WSR040	M10 Washer	107+13
ORS003	Rubber Post Caps	13	WSR420	M10 Grip Washer	100+10
OPA006/007	Aluminium Shoes	11	WSR440	Black Saddle Washer	7

OTU/OTW220

Orchard Unit
Fixing Kit



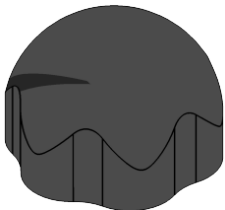
Illustrations Not
To Scale



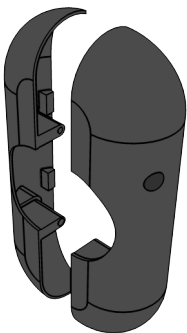
CHN005



CZS009BK



DZS005



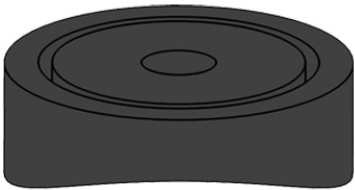
DZS007



DZS009



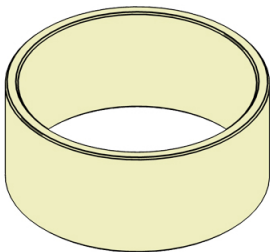
MSL003



ORS001



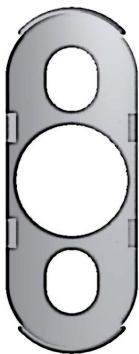
ORS002



ORS005



ORS017ZP

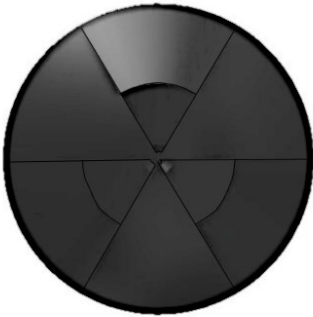


PZS001

OTU/OTW220

Orchard Unit Parts List

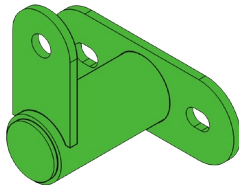
design
make
play
SutcliffePlay



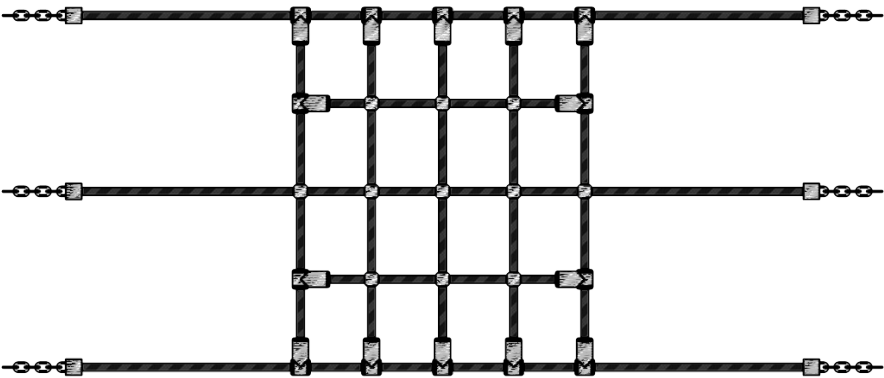
ORS003



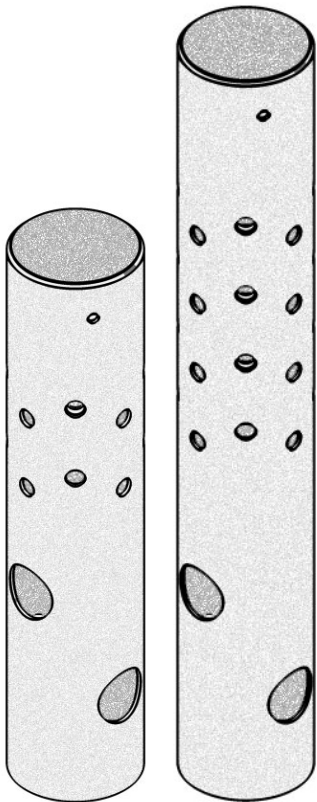
DZA106



ORM005



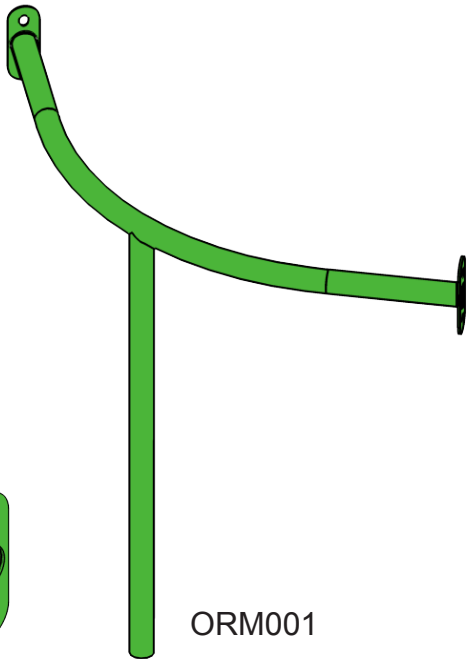
ORR200



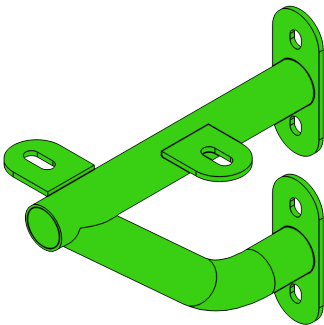
OPA006 or OPA007
Wet Pour or Loose Fill



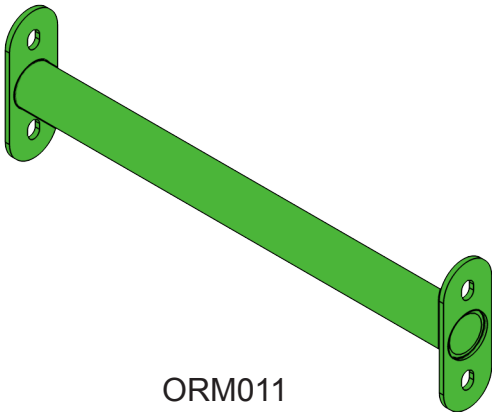
ORR205



ORM001



DZA652

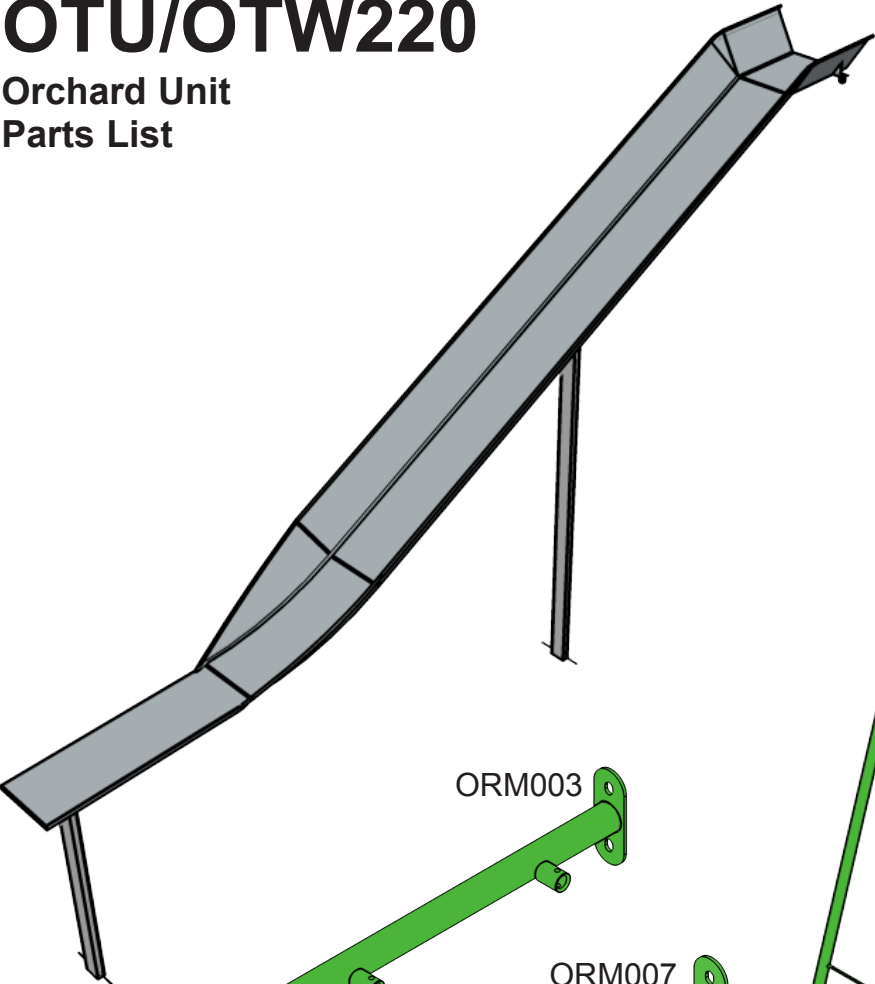


ORM011

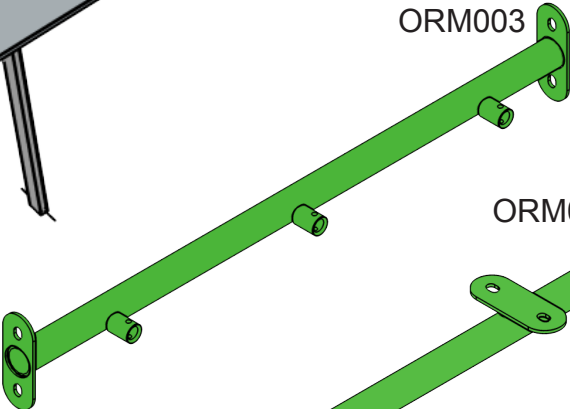
OTU/OTW220

Orchard Unit Parts List

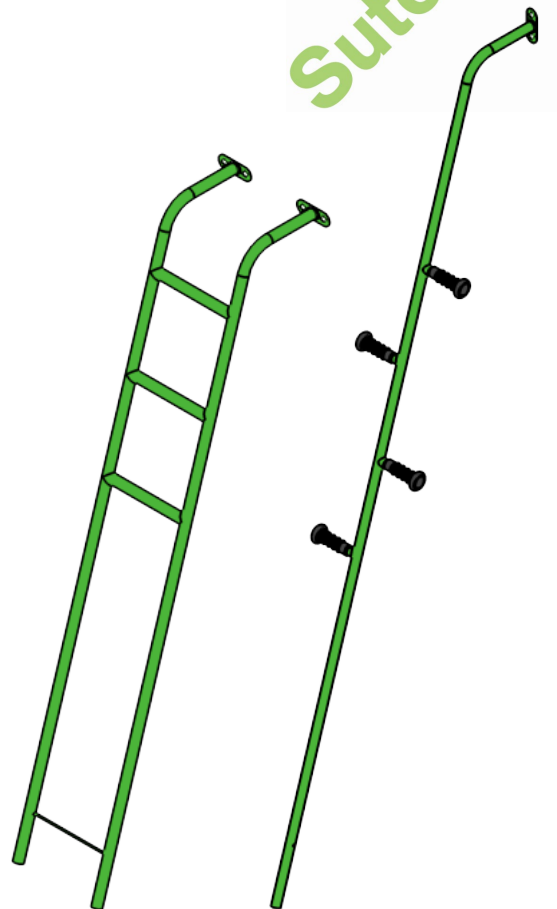
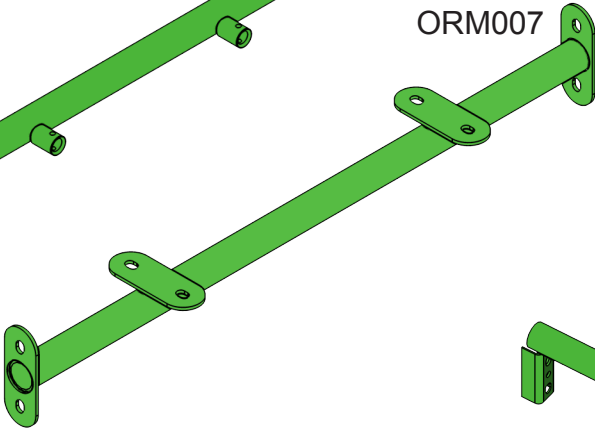
design
make
play
SutcliffePlay



ORM003

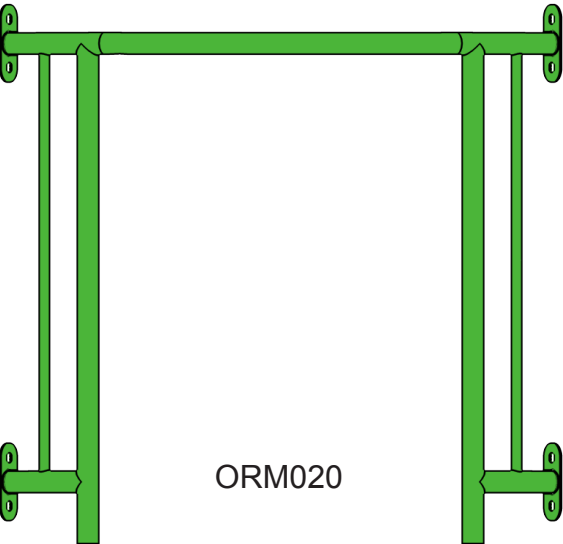


ORM007

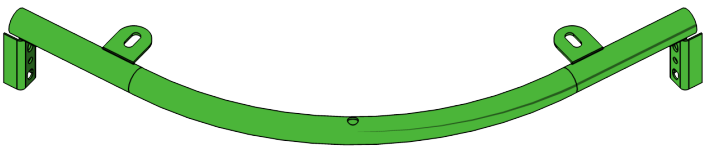


ORM004

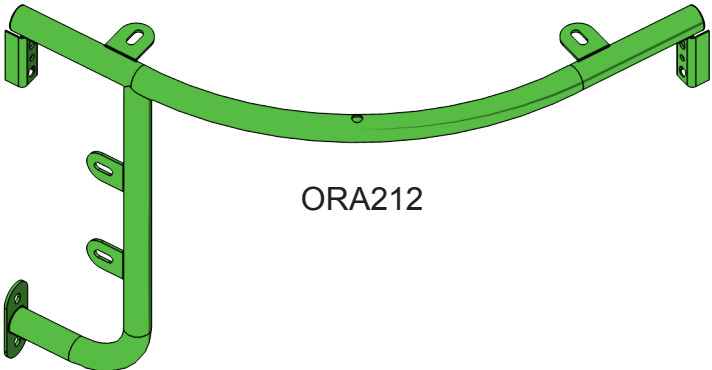
ORA206



ORM020



ORA202

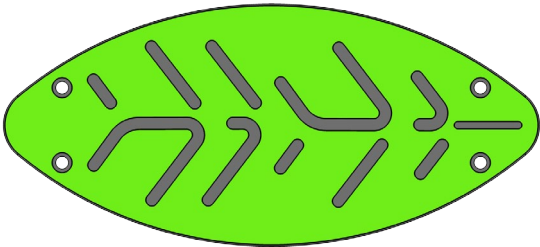


ORA212

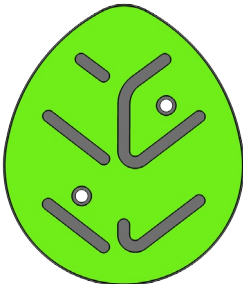
OTU/OTW220

Orchard Unit Parts List

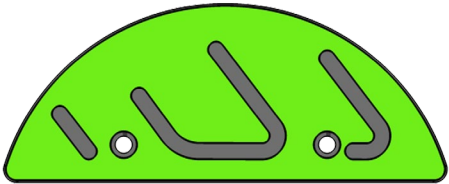
design
make
play
SutcliffePlay



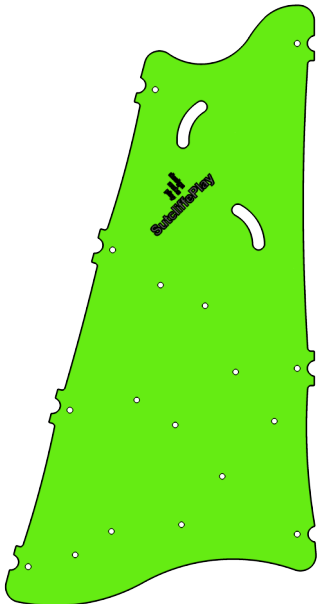
ORP007



ORP004



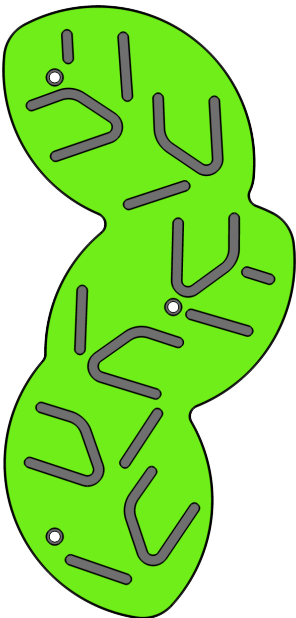
ORP008



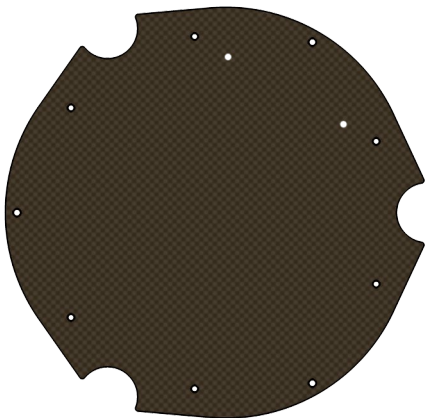
ORP005



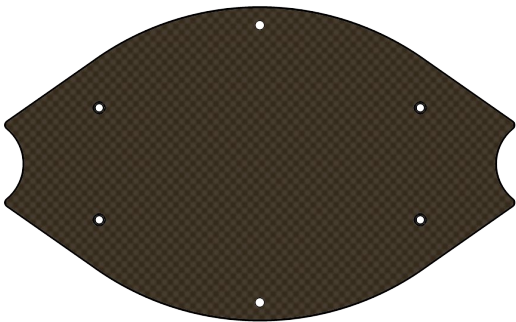
ORP006



ORP003



ORP026

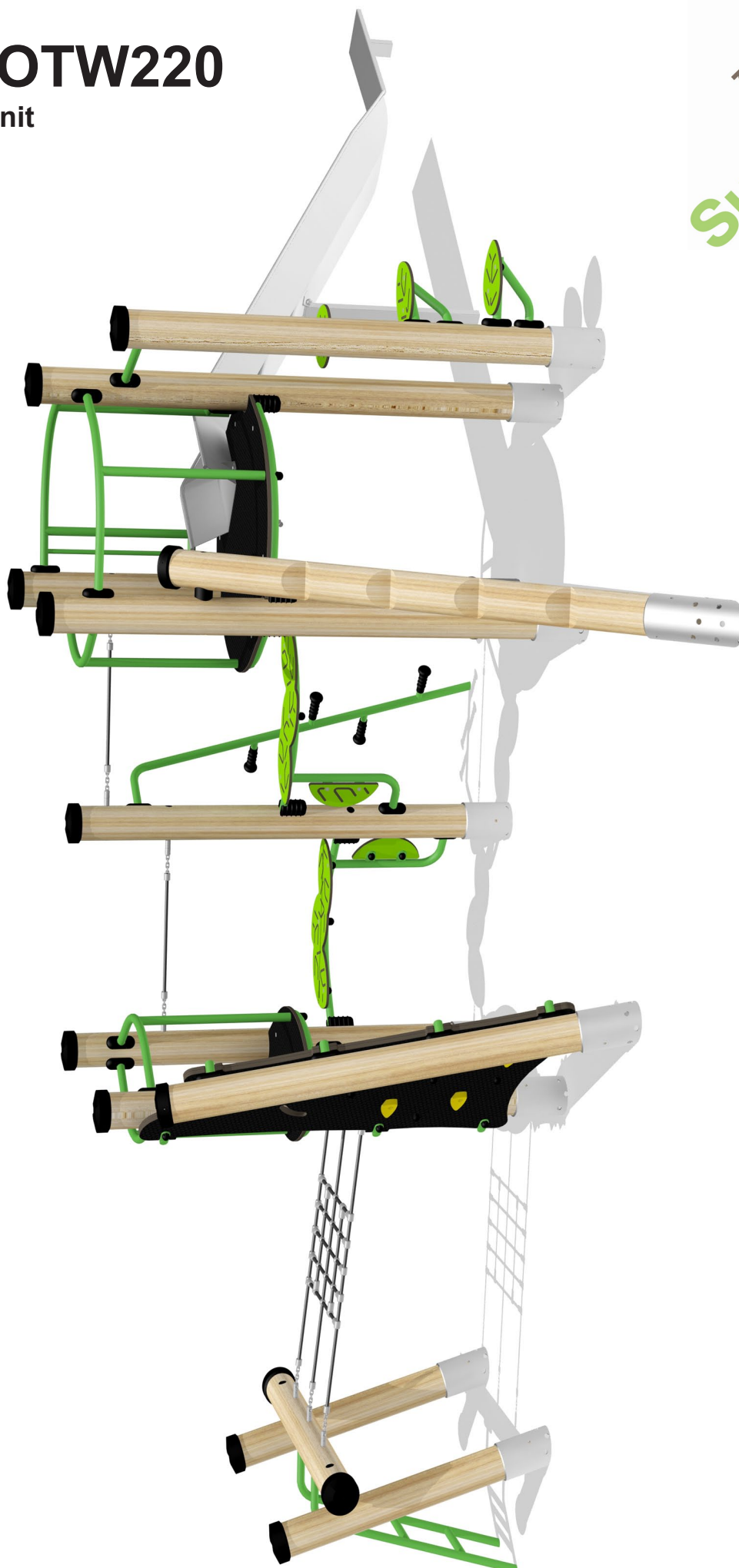


ORP002

OTU/OTW220

Orchard Unit

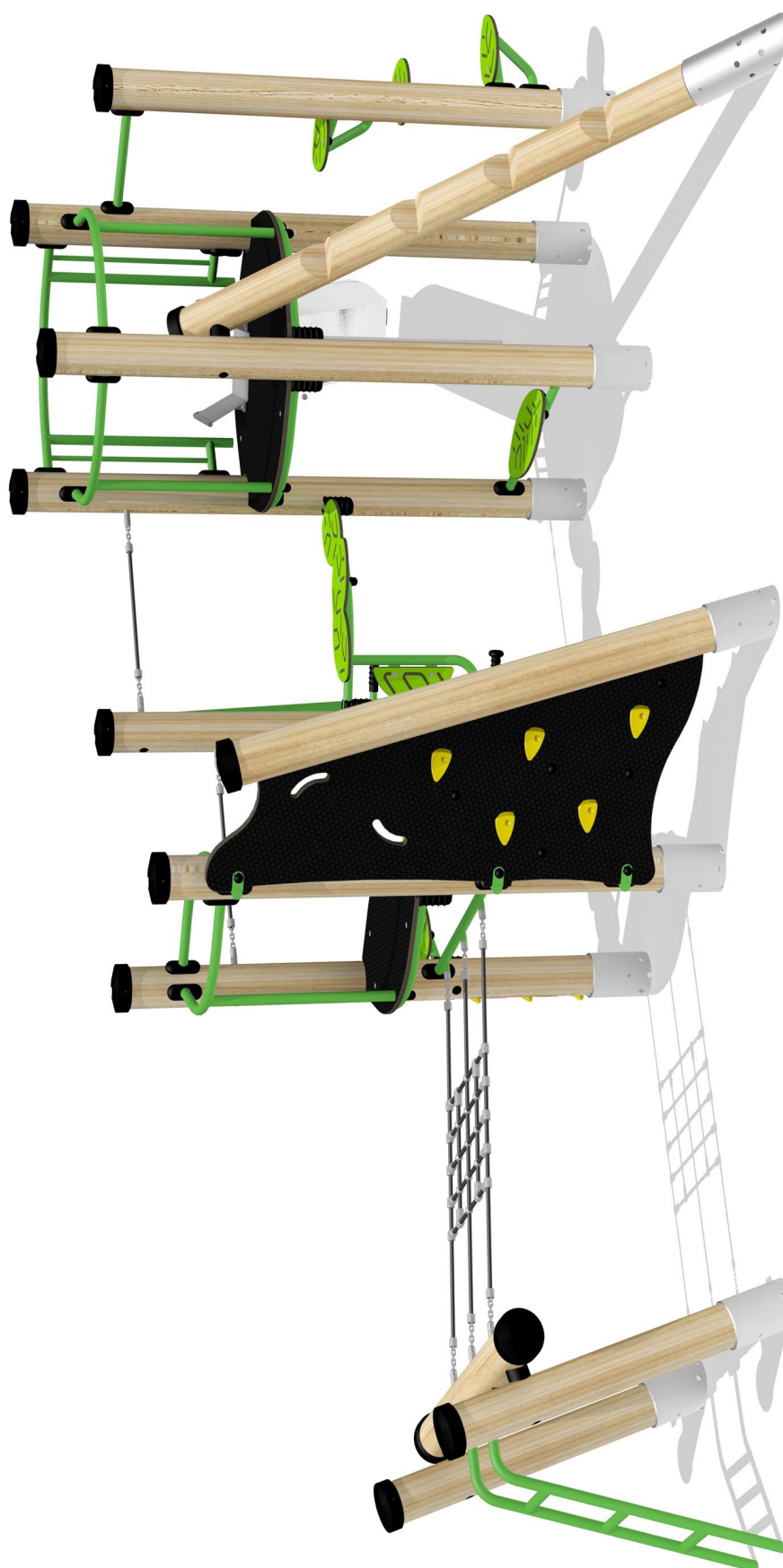
design
make
play
SutcliffePlay



OTU/OTW220

Orchard Unit

design
make
play
SutcliffePlay



OTU/OTW220

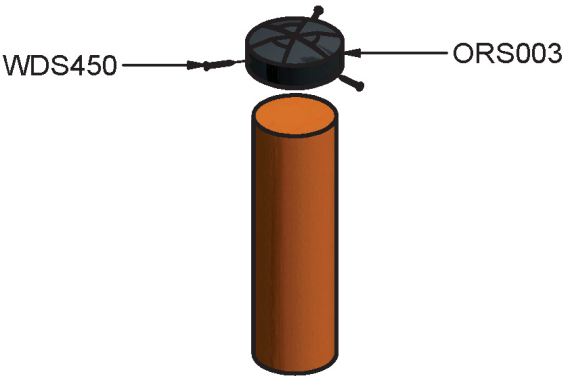
Orchard Unit Fixing Details - Post Caps and Shoes

design
make
play
SutcliffePlay

POST CAPS

FIT RUBBER CAPS TO THE END OF THE LOGS AND FIX IN POSITION USING 3 OFF WDS450 PER JOINT.

NOTE THE RUBBER CAPS ARE A TIGHT FIT ON THE LOGS.

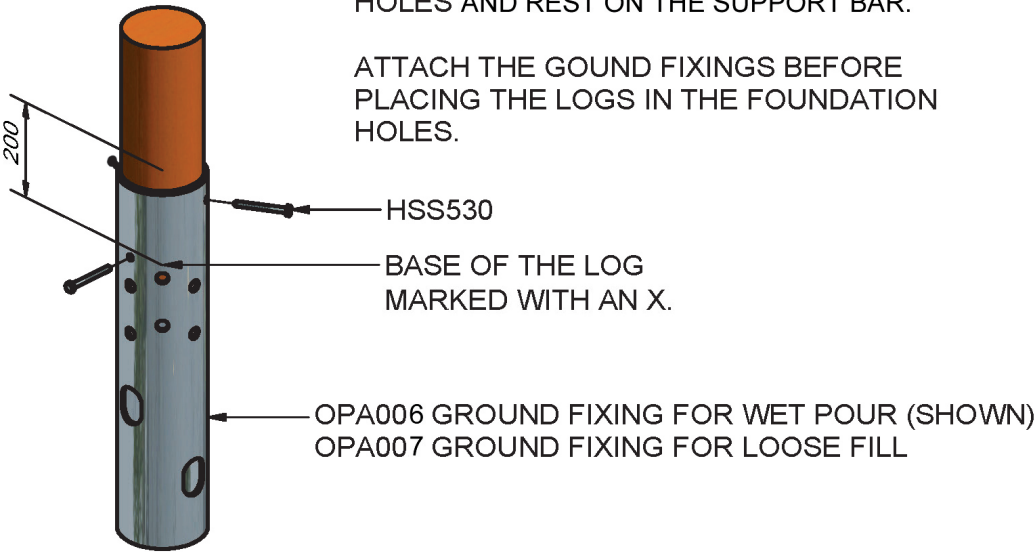


PARTS PER JOINT		
STOCK CODE	DESCRIPTION	QTY
ORS003	RUBBER POST CAP	1
WDS450	12 x 2" CSK POZI SCREW	3

GROUND FIXINGS

IMPORTANT NOTE
INSERT THE LOGS INTO THE GROUND FIXINGS 200MM ONLY. THE BOTTOM OF THE LOG SHOULD LINE UP WITH THE TOP VENTILATION HOLES AND REST ON THE SUPPORT BAR.

ATTACH THE GROUND FIXINGS BEFORE PLACING THE LOGS IN THE FOUNDATION HOLES.



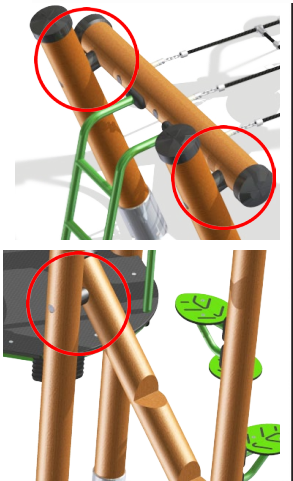
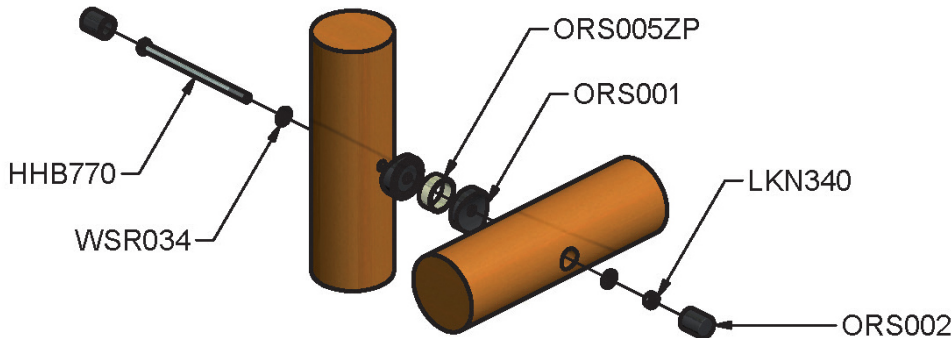
PARTS PER GROUND FIXING		
STOCK CODE	DESCRIPTION	QTY
HSS530	M10 x 80 COACH SCREW BZP	3
OPA006/007	750/1050 ORCHARD SHOE ANODIZED	1

OTU/OTW220

Orchard Unit
Fixing Details - Post Joints and Ropes

design
make
play
SutcliffePlay

LOG JOINTS

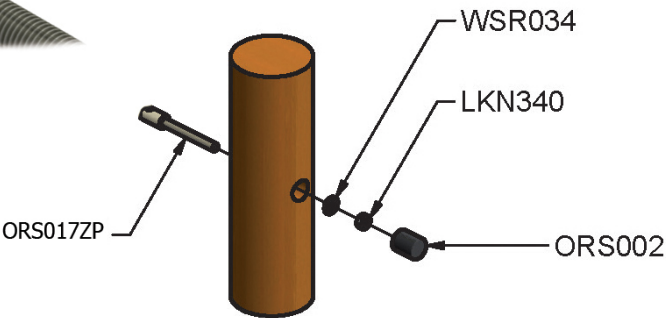
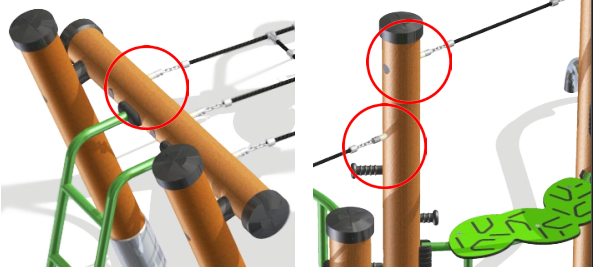
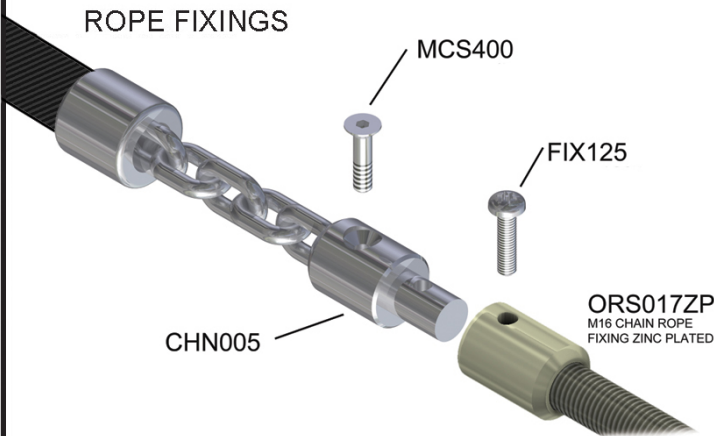


IMPORTANT NOTE
TWIST THE RUBBER SPACERS
SO THAT THEY ARE FLUSH
AGAINST THE LOGS.

PARTS PER LOG JOINT

STOCK CODE	DESCRIPTION	QTY
HHB770	M16 x 260 HEX HEAD BOLT	1
LKN340	M16 NYLOC NUT	1
ORS001	TIMBER RUBBER SPACER	2
ORS002	35 DIA RUBBER LOG PLUG	2
ORS005ZP	METAL SPACER RING ZINC PLATED	1
WSR034	M16 FLAT WASHER FORM C	2

ROPE FIXINGS



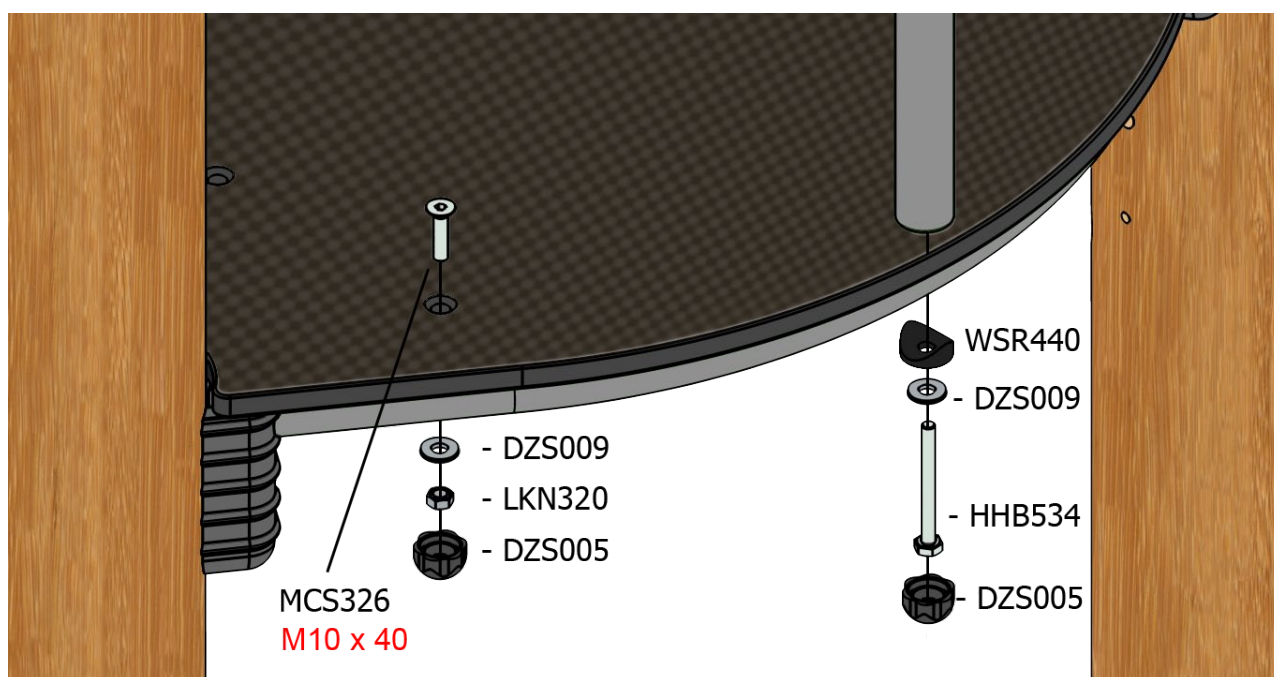
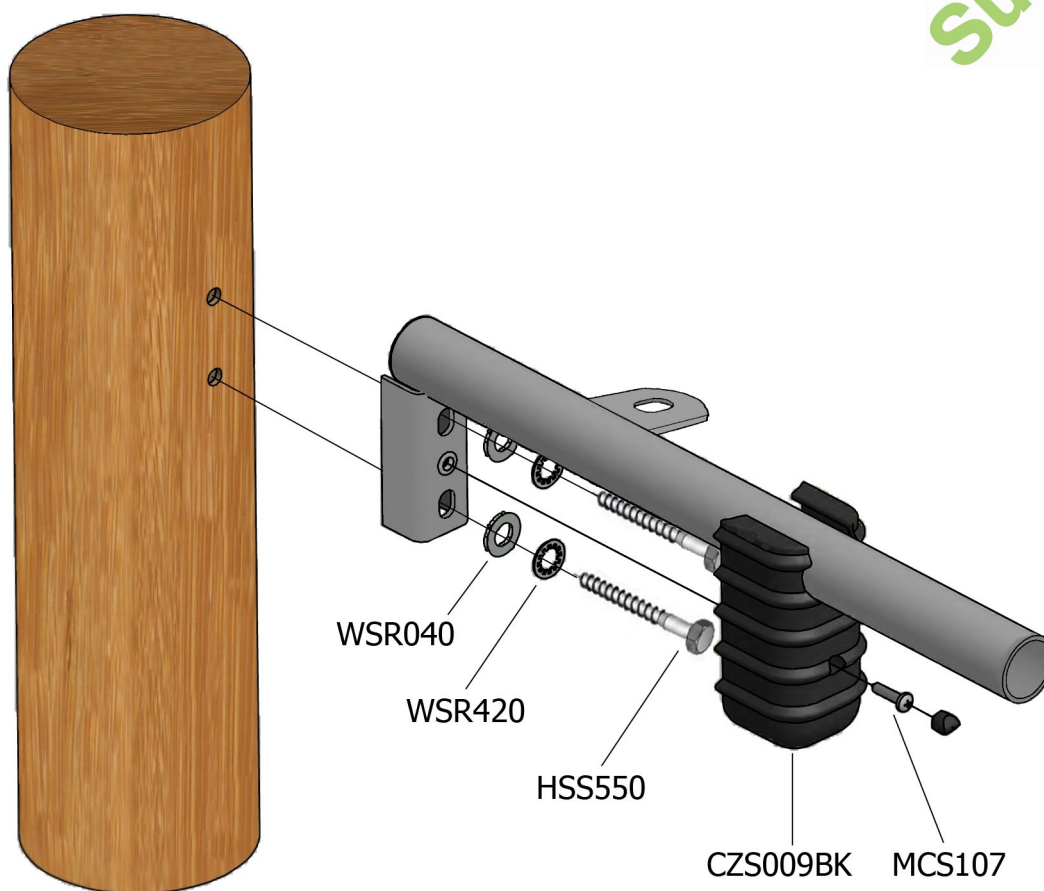
PARTS PER ROPE JOINT

STOCK CODE	DESCRIPTION	QTY	STOCK CODE	DESCRIPTION	QTY
CHN005	CHAIN ADAPTER	1	LKN340	M16 NYLOC NUT	1
FIX125	M6 x 25 SECURITY BOLT	1	ORS002	35 DIA RUBBER LOG PLUG	1
MCS400	M6 x 25 COUNTERSINK BOLT	1	WSR034	M16 FLAT WASHER FORM C	1

OTU/OTW220

Orchard Unit
Fixing Details - Decks

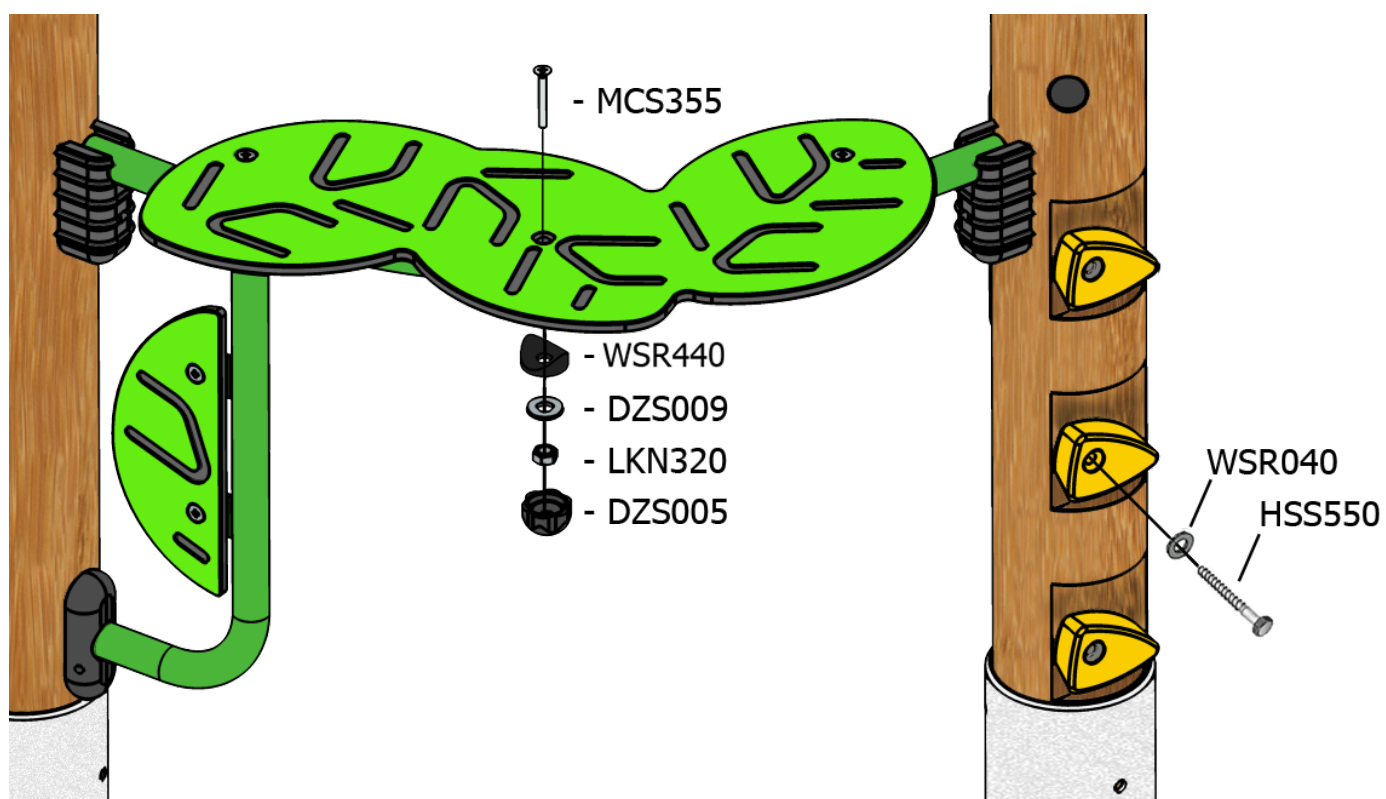
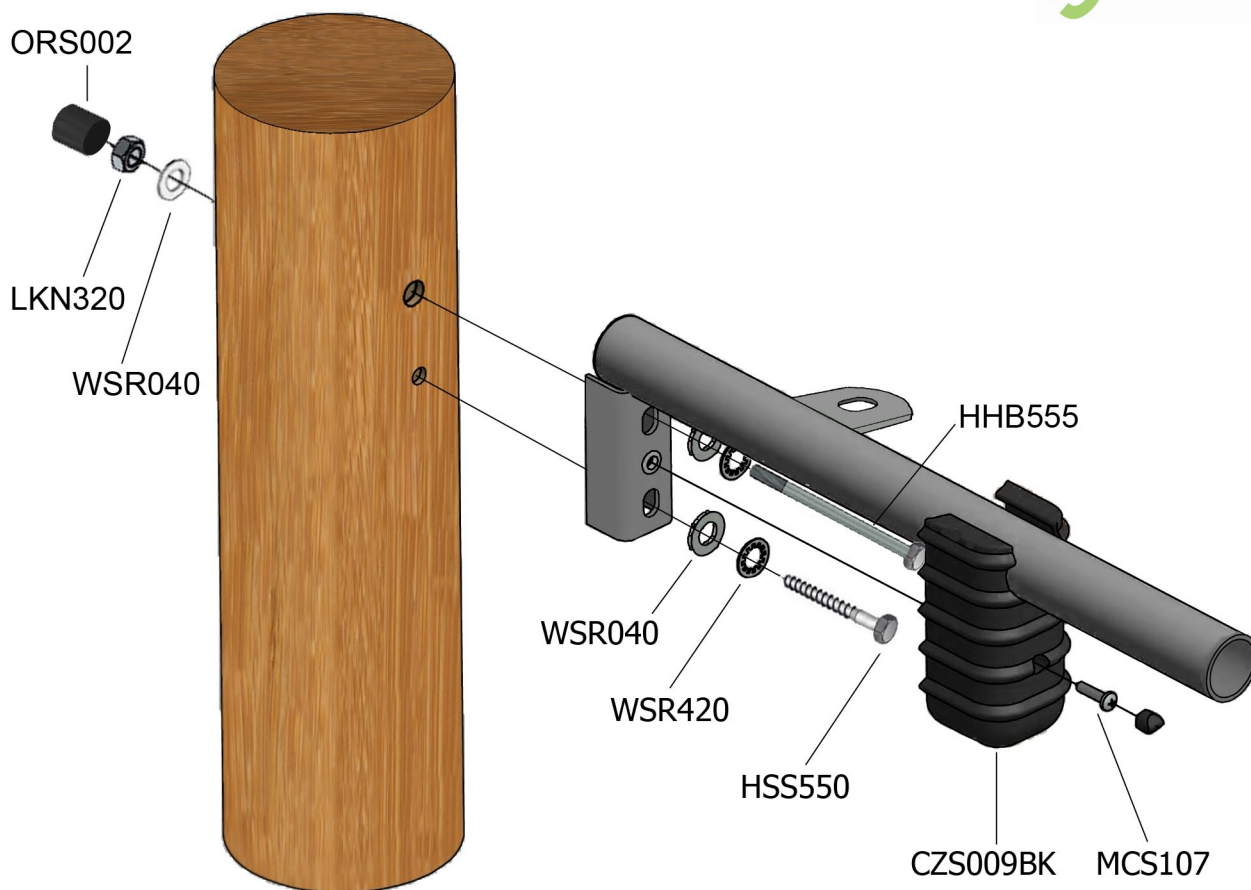
design
make
play
SutcliffePlay



OTU/OTW220

Orchard Unit
Fixing Details - Traverse Bridges

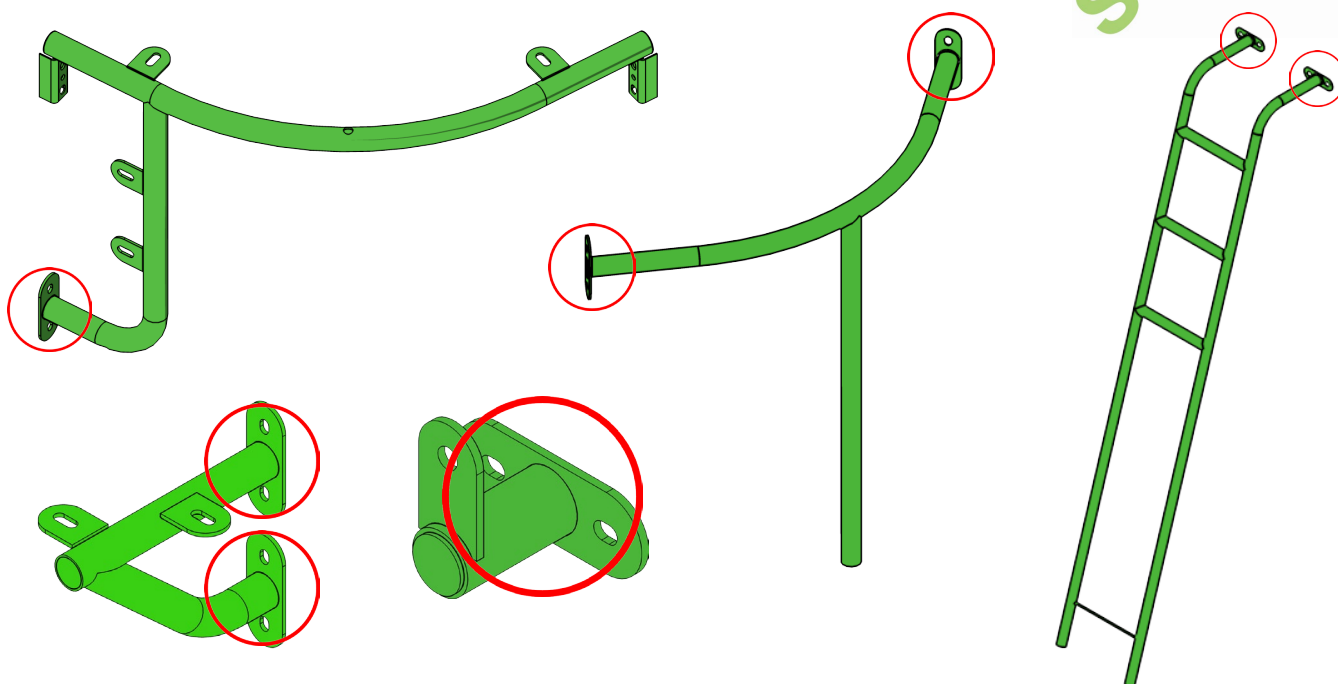
design
make
play
SutcliffePlay



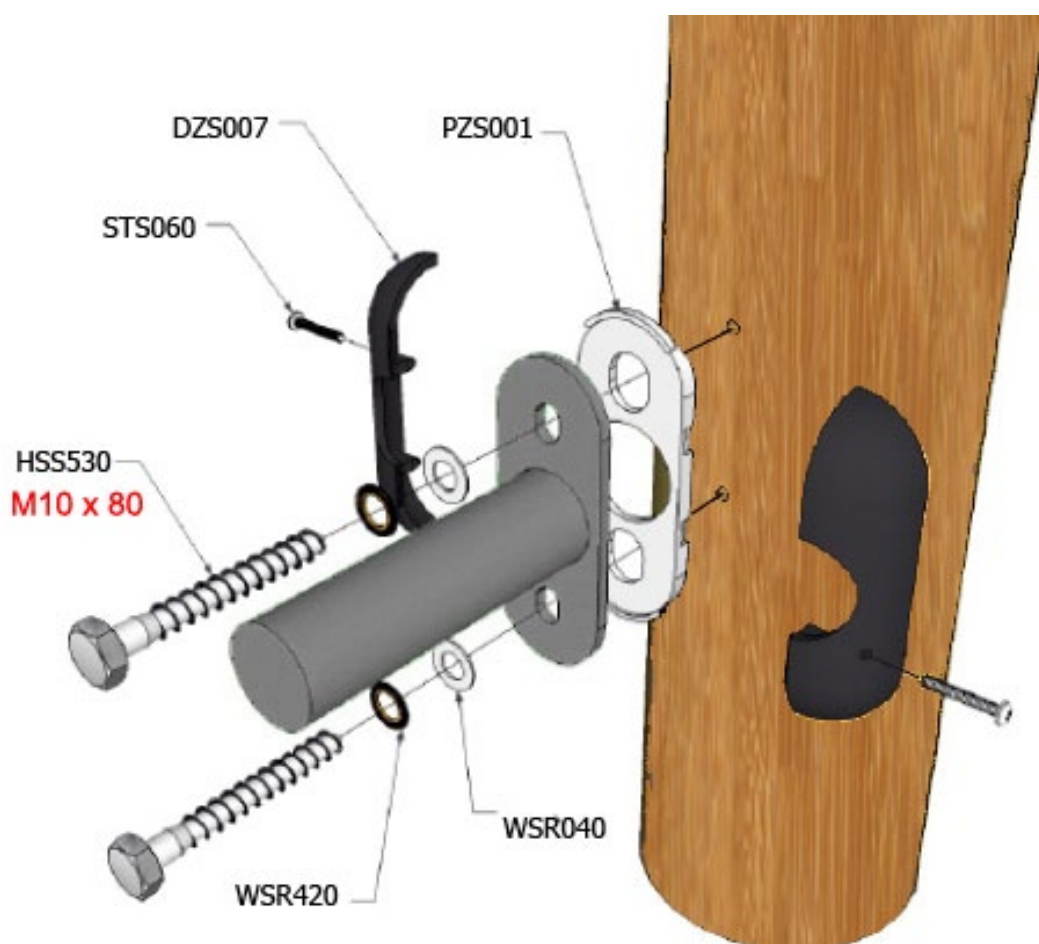
OTU/OTW220

Orchard Unit

Fixing details for the following activities
(please check coach screw length):



design
make
play
SutcliffePlay



OTU/OTW220

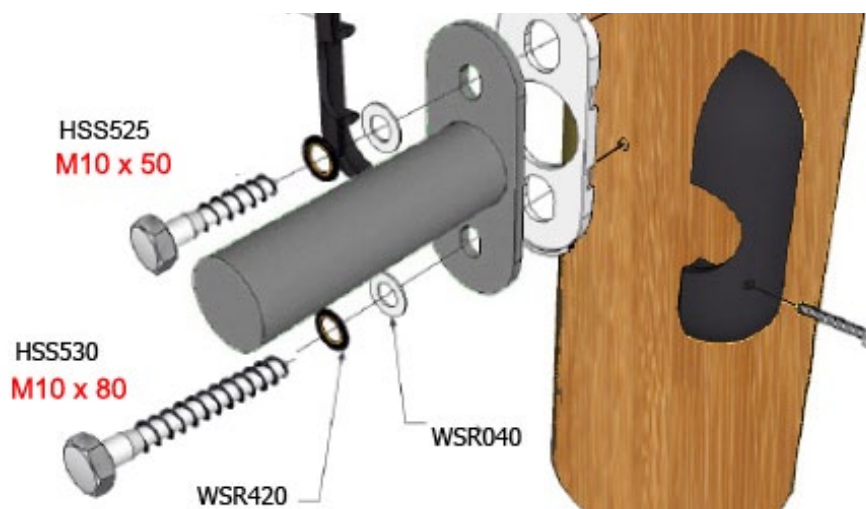
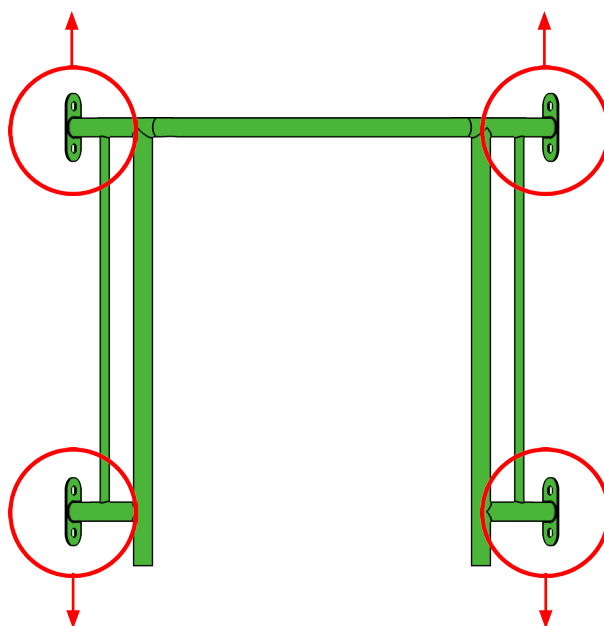
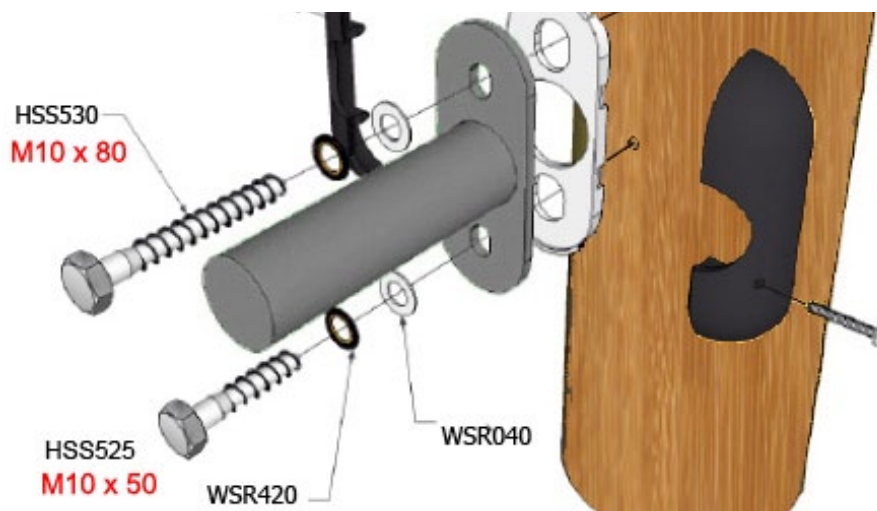
Orchard Unit

**Fixing details for the slide entrance barrier
(please check coach screw length):**



design
make
play

SutcliffePlay

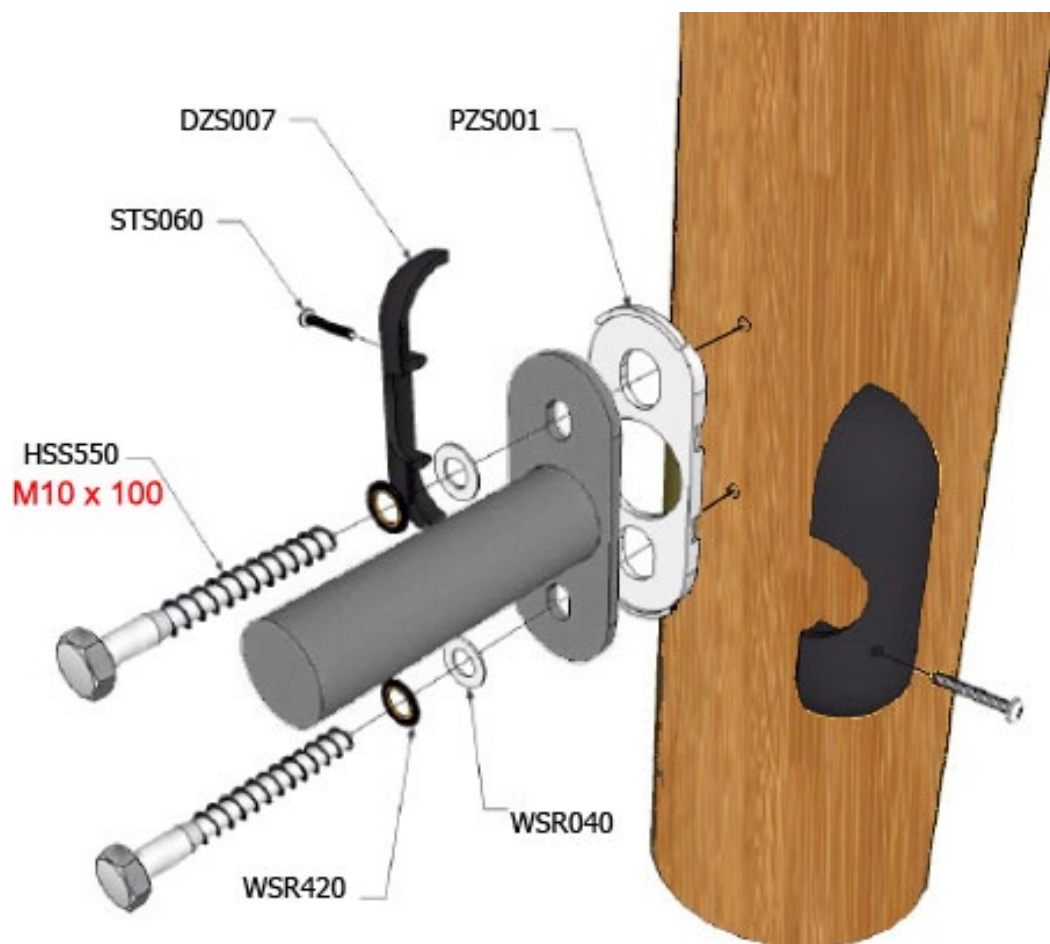
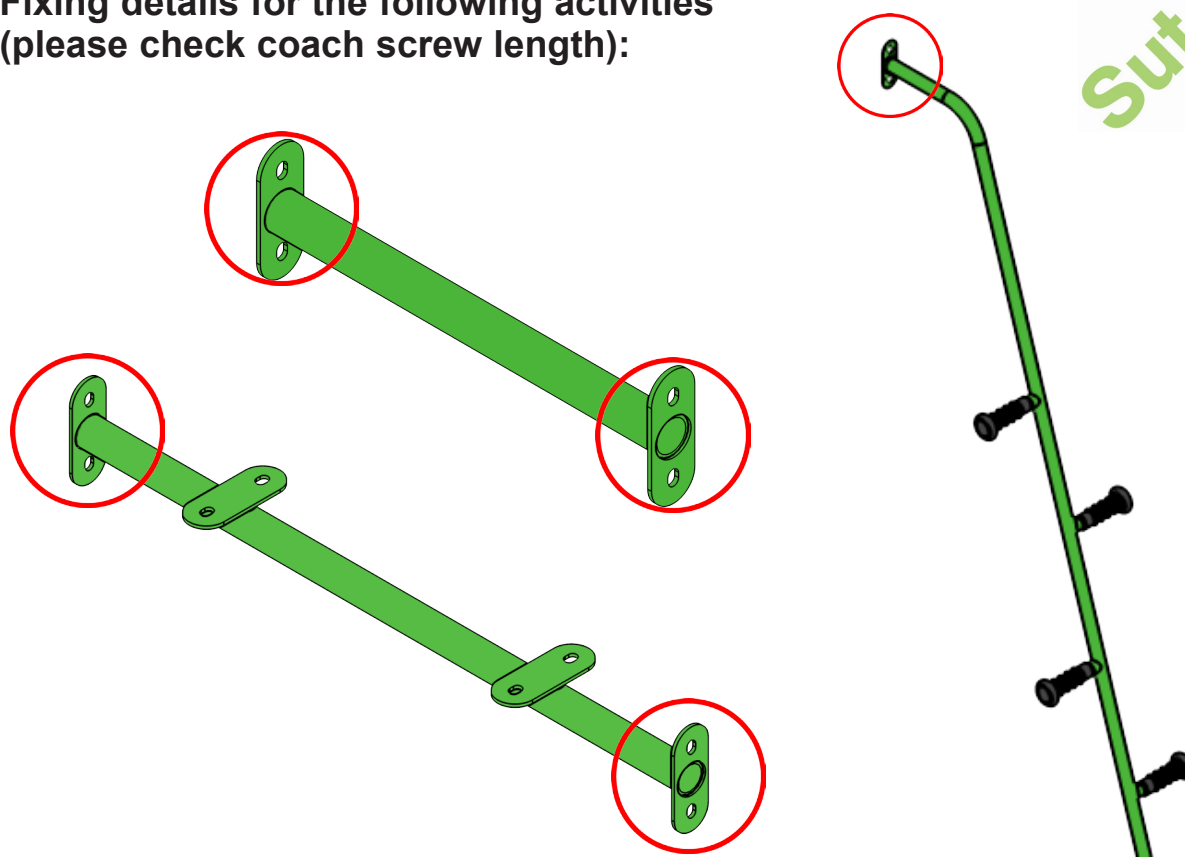


OTU/OTW220

Orchard Unit

Fixing details for the following activities
(please check coach screw length):

design
make
play
SutcliffePlay

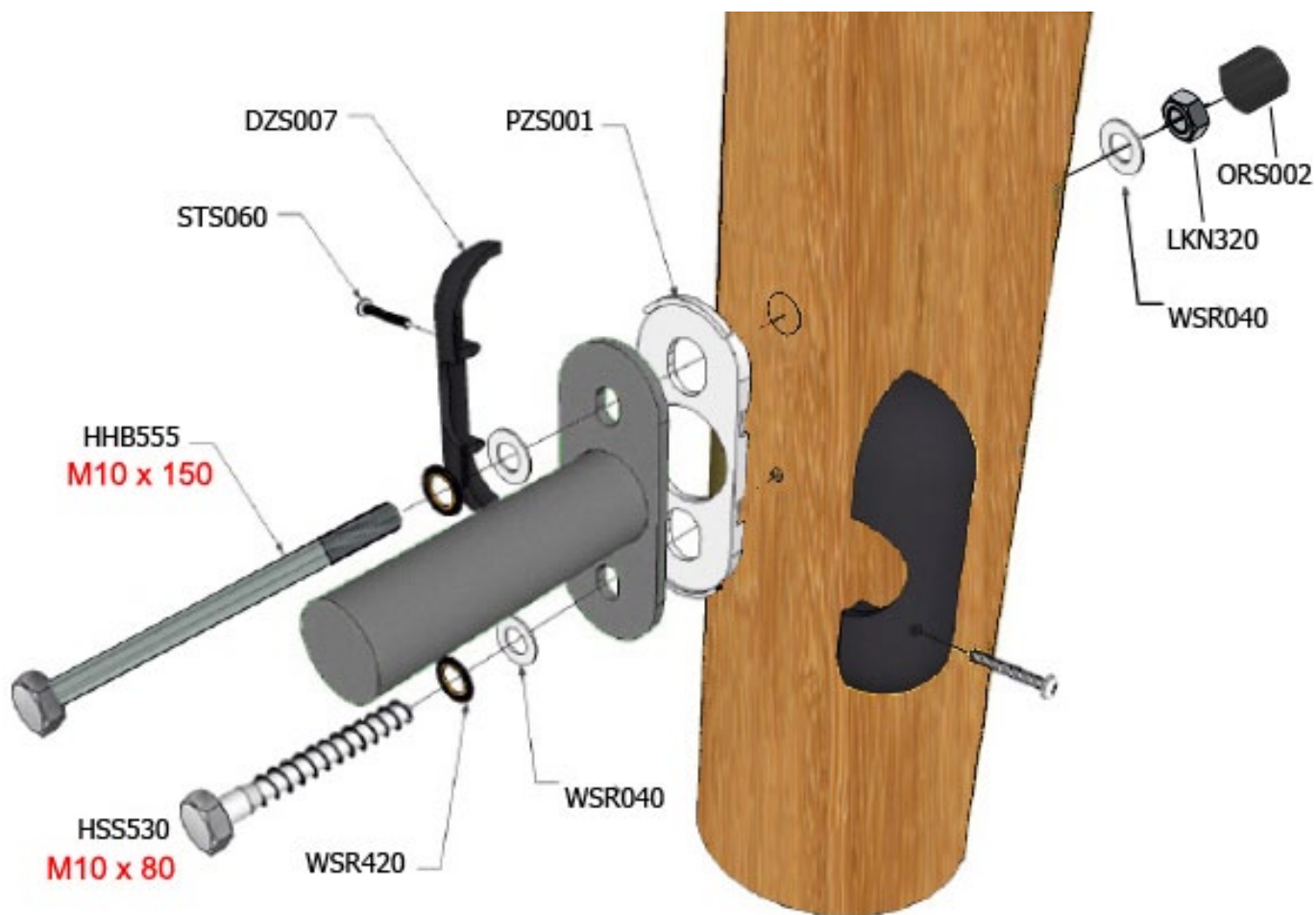
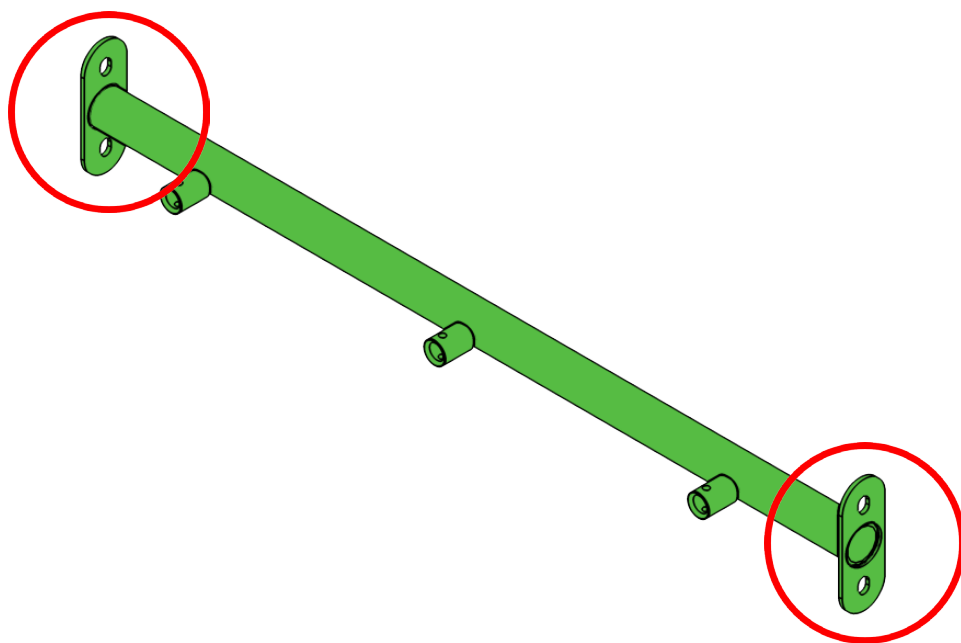
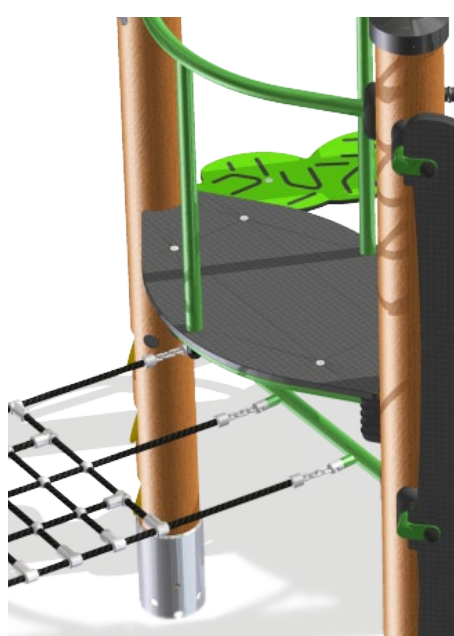


OTU/OTW220

Orchard Unit

Fixing details for the following activities
(please check coach screw length):

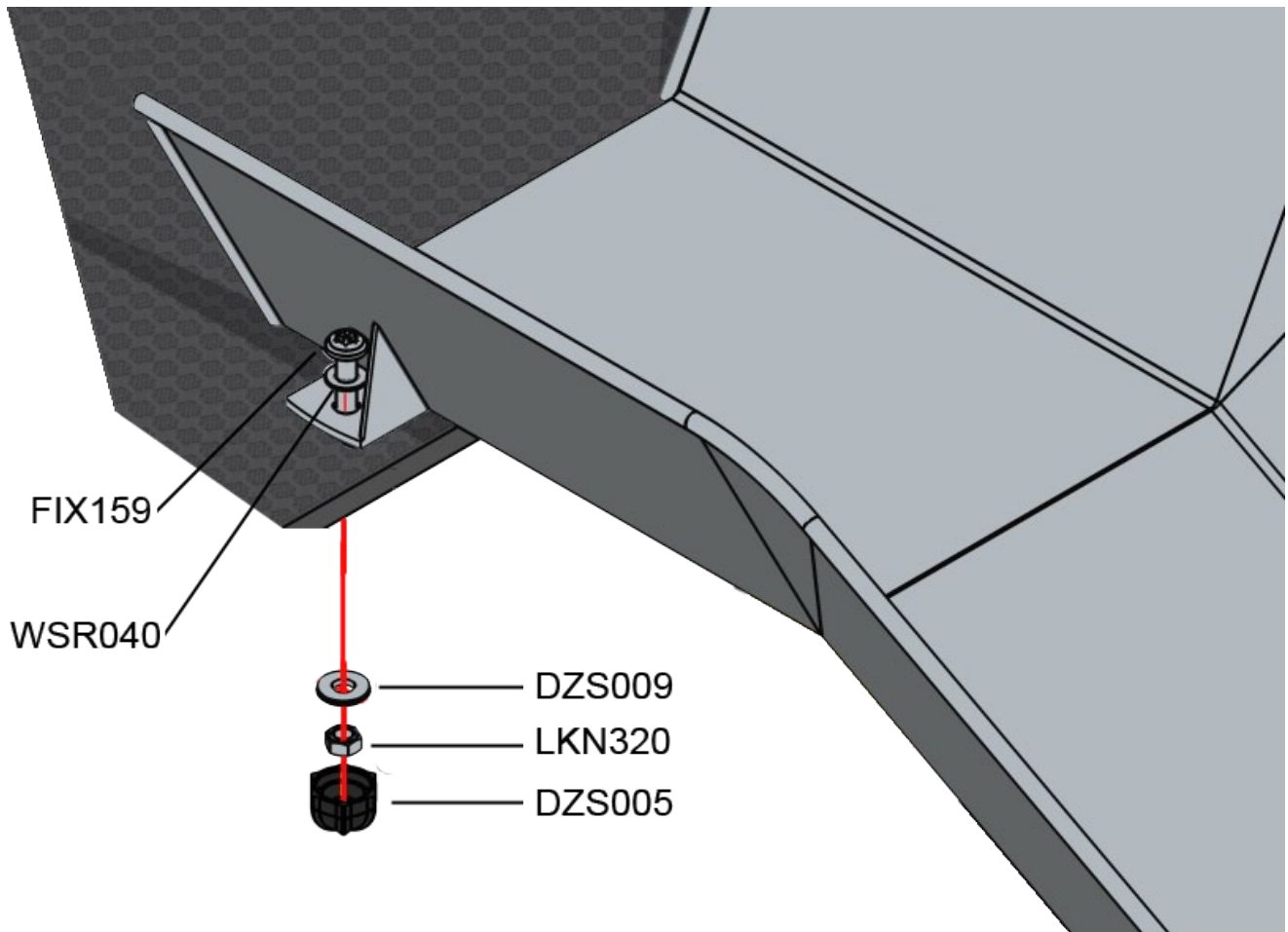
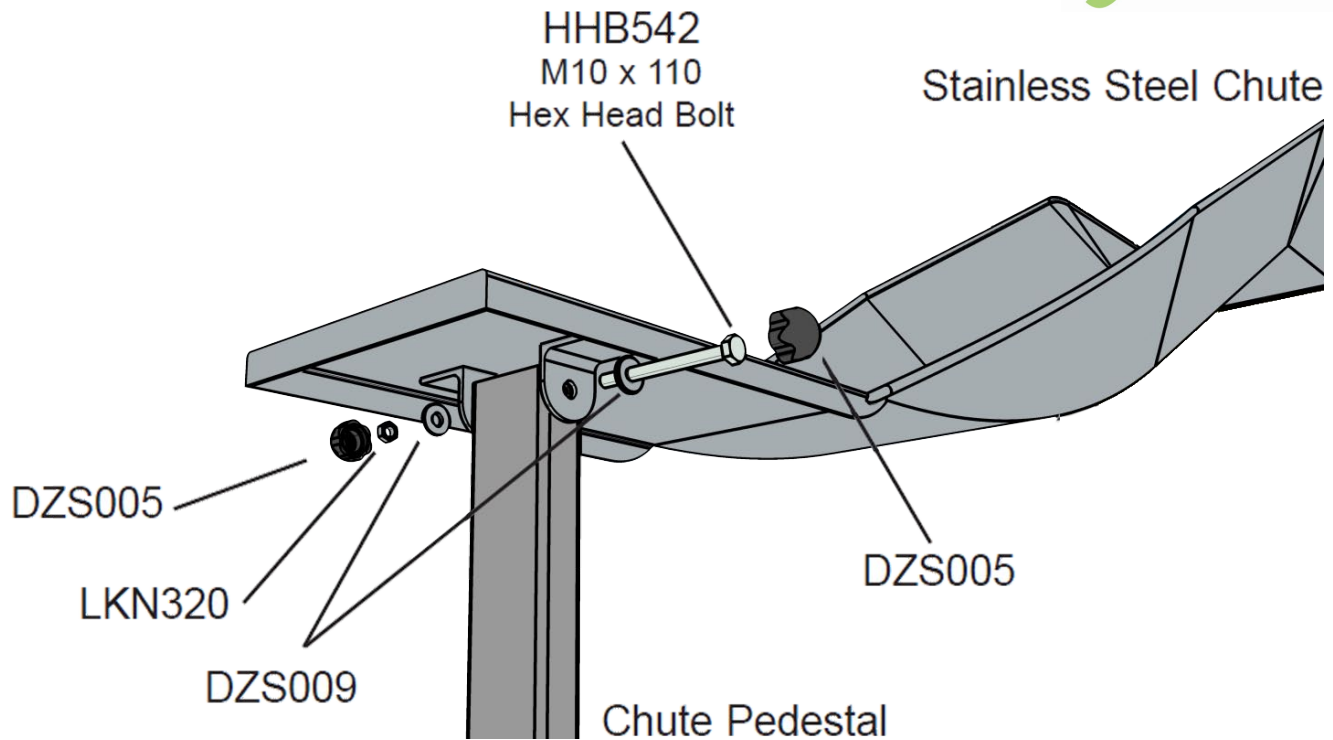
design
make
play
SutcliffePlay



OTU/OTW220

Orchard Unit
Fixing Details - Steel Slide

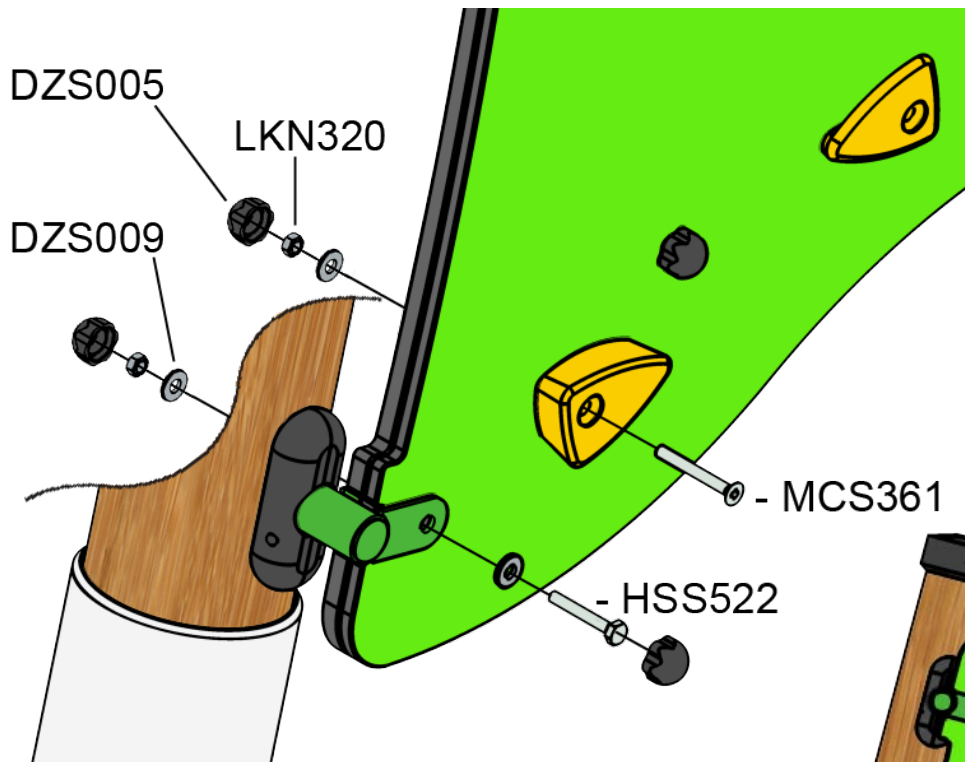
design
make
play
SutcliffePlay



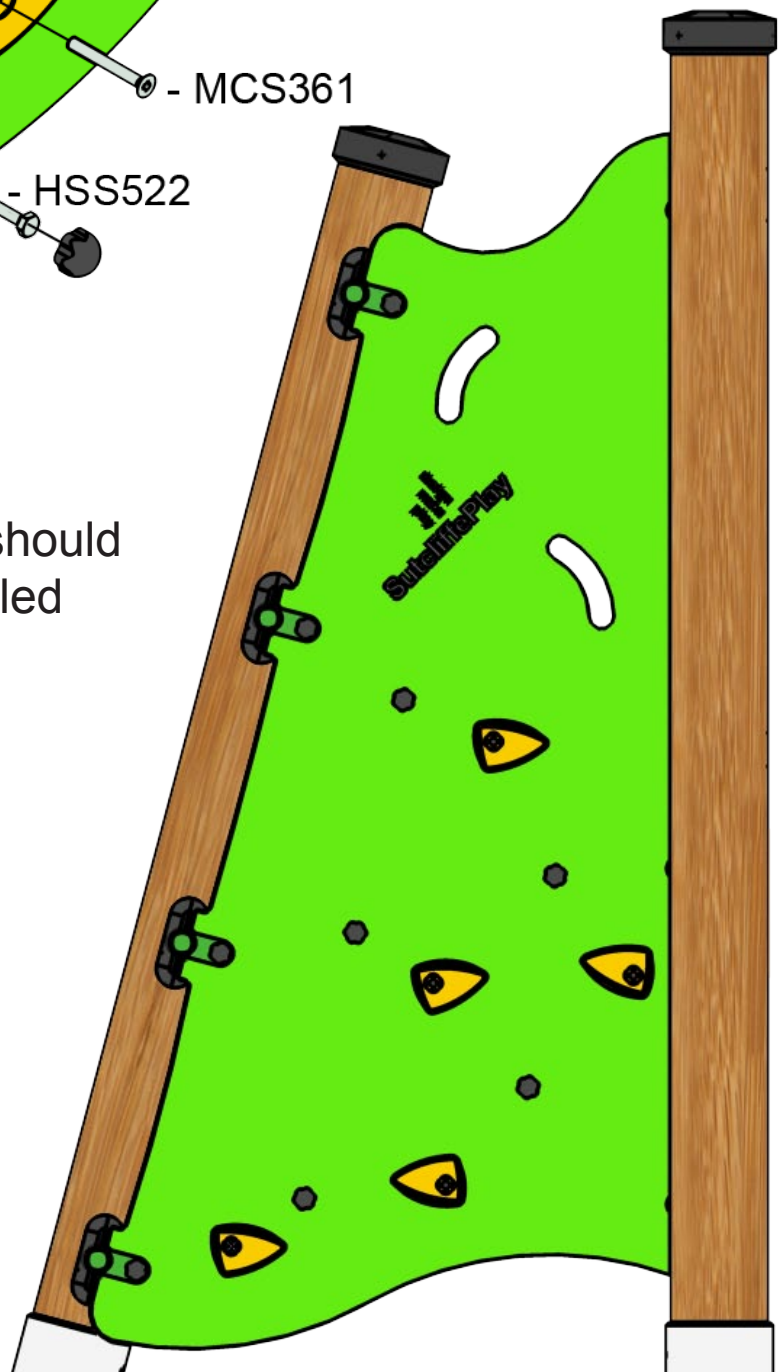
OTU/OTW220

Orchard Unit
Fixing Details - Climbing Wal

design
make
play
SutcliffePlay

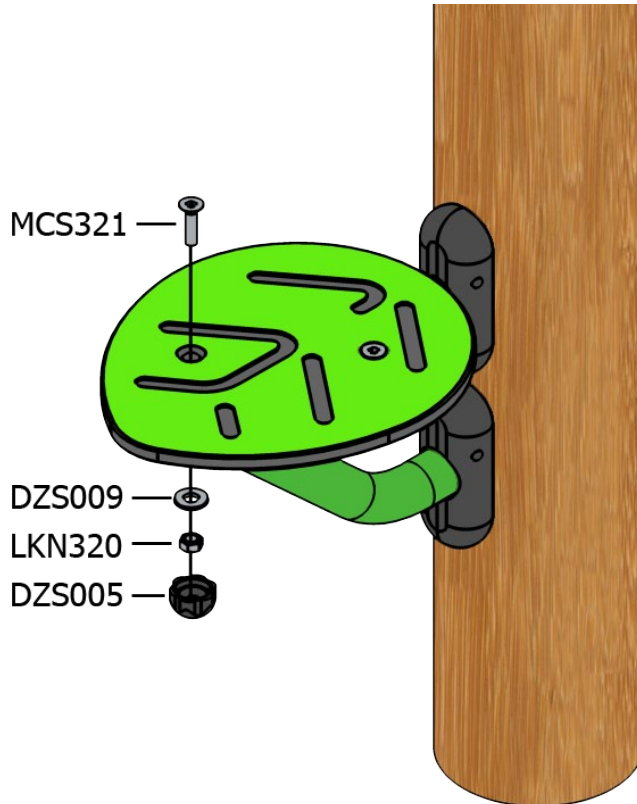


Grips on the climbing wall should be positioned in the pre-drilled holes as illustrated:

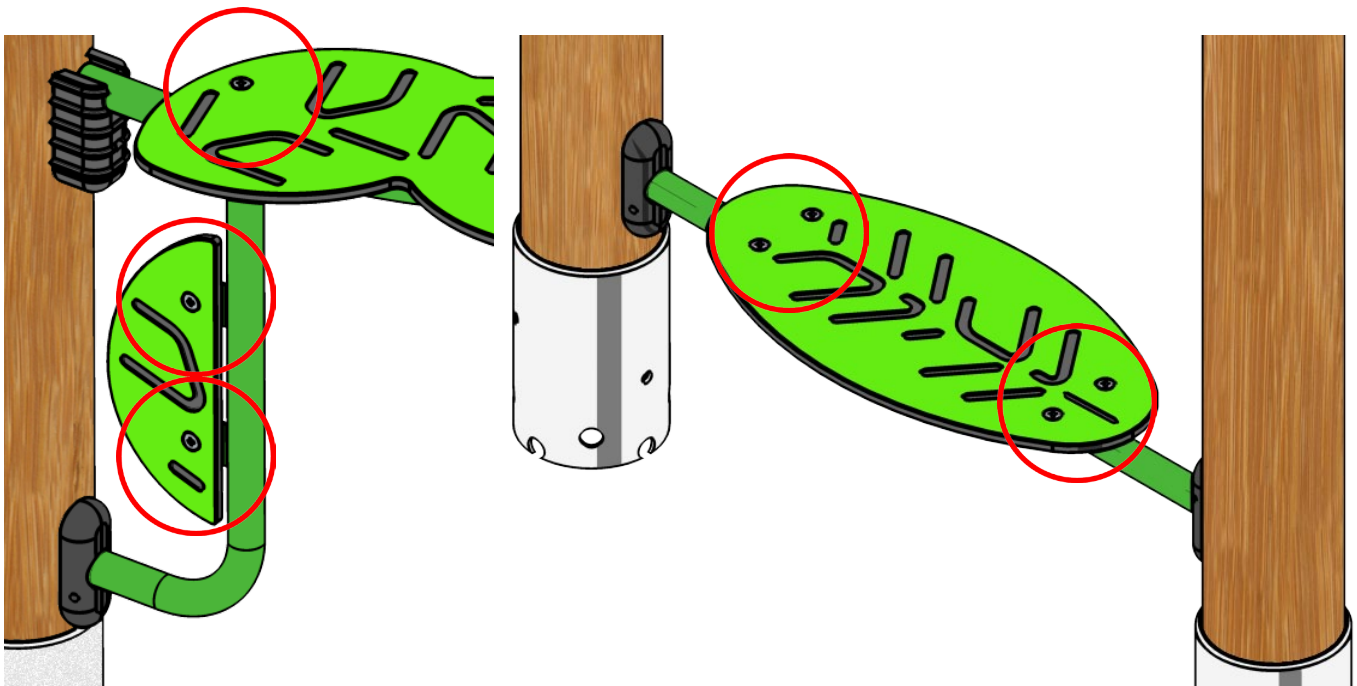


OTU/OTW220

Orchard Unit Fixing Details - Panel Fixing



This assembly of fixings is featured on the following points across the unit:



OTU/OTW220

Orchard Unit Maintenance Instructions

NOTE

The warranty is invalidated if these instructions are not followed.
All wood needs annual inspection and retreatment where required.

Recommended Regular Inspection and Maintenance

	Interval Days				
	7	14	28	56	365
Check stability of structure, tighten connections if required.	<input type="checkbox"/>	<input type="checkbox"/>	<input type="checkbox"/>	<input checked="" type="checkbox"/>	<input type="checkbox"/>
Check all uprights at ground level for corrosion and/or rot. Replace any defective parts.	<input type="checkbox"/>	<input type="checkbox"/>	<input type="checkbox"/>	<input type="checkbox"/>	<input checked="" type="checkbox"/>
Check all painted elements for damage, rub down and repaint or replace as required.	<input type="checkbox"/>	<input type="checkbox"/>	<input type="checkbox"/>	<input checked="" type="checkbox"/>	<input type="checkbox"/>
Check chain/ropework assemblies for wear and damage, replace if required.	<input type="checkbox"/>	<input checked="" type="checkbox"/>	<input type="checkbox"/>	<input type="checkbox"/>	<input type="checkbox"/>
Check rotating and pivot points for wear and smooth running lubricate or replace if required.	<input type="checkbox"/>	<input type="checkbox"/>	<input checked="" type="checkbox"/>	<input type="checkbox"/>	<input type="checkbox"/>
Check rubber parts for wear and/or damage, replace if required.	<input type="checkbox"/>	<input type="checkbox"/>	<input checked="" type="checkbox"/>	<input type="checkbox"/>	<input type="checkbox"/>
Check tension cables, adjust if required.	<input type="checkbox"/>	<input type="checkbox"/>	<input checked="" type="checkbox"/>	<input type="checkbox"/>	<input type="checkbox"/>
Check wear of cables, replace if required.	<input type="checkbox"/>	<input type="checkbox"/>	<input checked="" type="checkbox"/>	<input type="checkbox"/>	<input type="checkbox"/>
Check slide chutes for smoothness and any foreign elements, remove any found.	<input type="checkbox"/>	<input type="checkbox"/>	<input checked="" type="checkbox"/>	<input type="checkbox"/>	<input type="checkbox"/>
Check rubber safety surfaces for damage and poor performance, repair or replace if required.	<input type="checkbox"/>	<input type="checkbox"/>	<input type="checkbox"/>	<input checked="" type="checkbox"/>	<input type="checkbox"/>
Check loose fill safety surfaces, remove any foreign elements, rake level and top up if required.	<input type="checkbox"/>	<input type="checkbox"/>	<input checked="" type="checkbox"/>	<input type="checkbox"/>	<input type="checkbox"/>

Disposal Instructions

All components should be broken down into categories of:-

- 1 **Mild Steel** - all Swing Frames, Playzone, Toddlerzone, Teenzone activities, Deck Frames and Springie Frames.
- 2 **Stainless Steel** - all Slides, Mirror Panels.
- 3 **Aluminium** - all Playzone and Toddlerzone Posts.
- 4 **Galvanised Steel** - all Chains and Teenzone Posts.
- 5 **Moulded Rubber Products without steel inserts** - all Toddlerzone Caps and edge details.
- 6 **Timber** - all natural timber, plywood, and MDF panels.

Wherever possible these materials should be taken to specialist recycling organisations and recycled.

In some cases where composite materials are used, then disposal at land fill sites is the only alternative such as:

- 7 **Moulded Rubber Products encasing steel inserts** - all Swing Seats, Deck Tops, Duo/Dizzy Disc Tops.
- 8 **High Pressure Laminate** - all Toddlerzone, Playzone and Teenzone Panels.
- 9 **Steel Core Polypropylene Rope** - all Scramble Nets, Space Nets, Playzone/Toddlerzone Ropes.