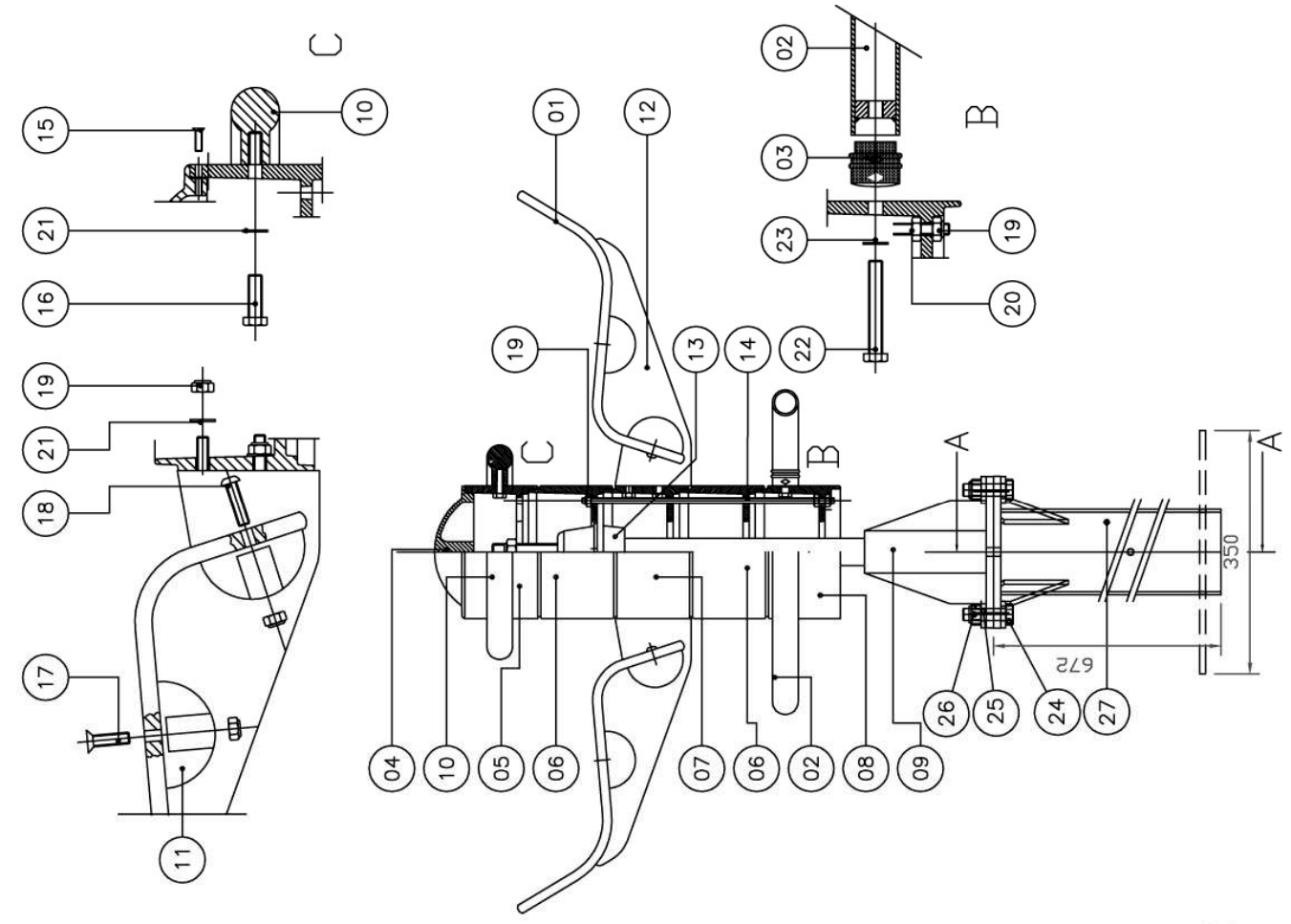


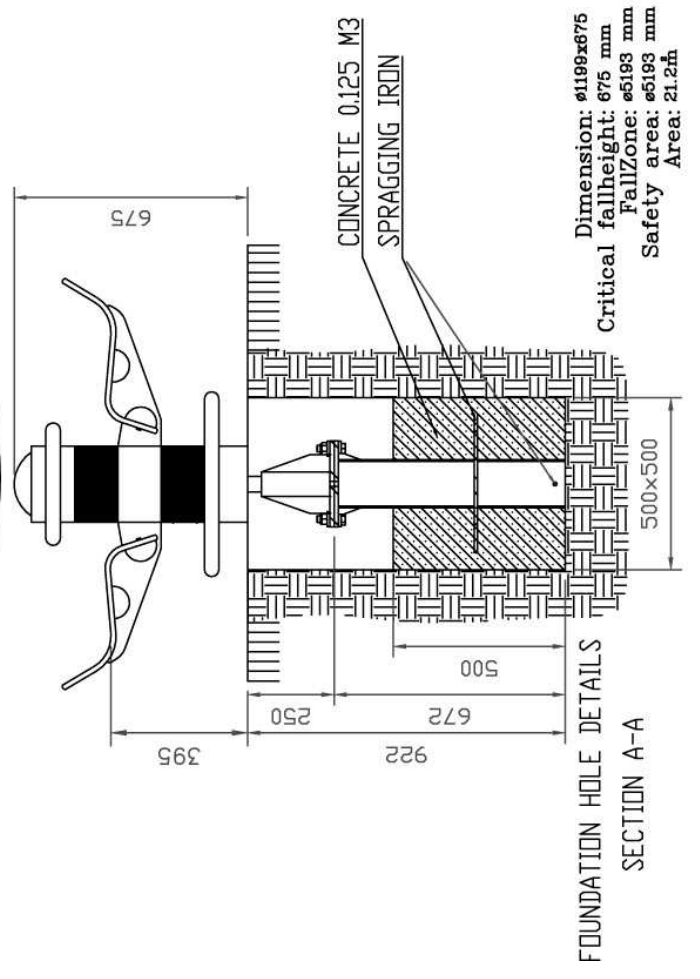
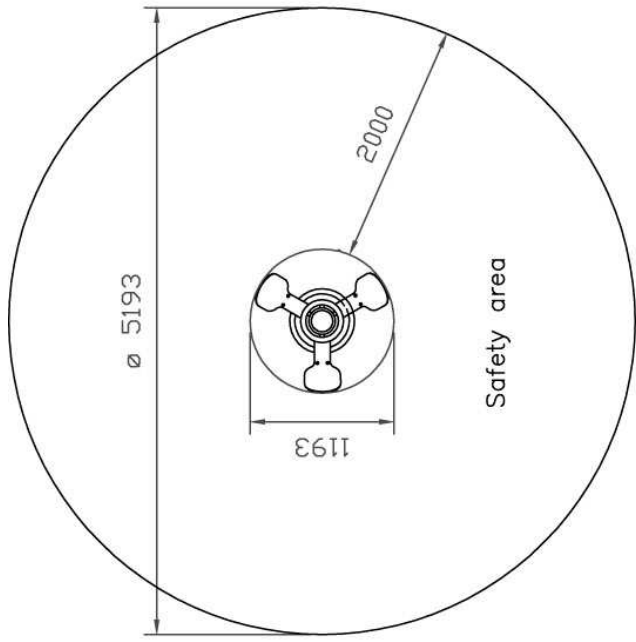
TRIO TWISTER NIR020 (766009)

PARTS LIST



BLAD NR: 766009 Triodraai PP09 DOOR: WE DATUM: 010708

	Article number	Description	Quant.
1	573133	Seat short round machined	3
2	603058	Foot ring machined	1
3	573056	Connecting plug 8" - 5/4" ALU.	3
4	573080	Alu cover for PP machined	1
5	603026	Top segment fixed for handhold	1
6	574091	Lower segment alu.	2
7	573166	Intermediate segment for 3 seats	1
8	573162	Intermediate segment for foot ring	1
9	603049	Foot PP machined	1
10	573095	Handhold Alu. Machined	1
11	575070	Connection cover, red 29.010.32	12
12	573089	Support large, alu.	3
13	361729	Hub housing incl. Bearings and bolts	1
14	544488	Threaded rod M10 for 4 segments	2
15	342323	Flat countersunk screw M6x20	3
16	346285	Tap bolt Stainless steel M10x25	3
17	342309	Flat countersunk screw bzk M10x30 Stainless steel	12
18	345118	Roundheaded screw BZK. M10x50 Stainless steel	6
19	331423	Selflocking nut M10, galv.	28
20	331415	Nut Stainless steel M10	2
21	311415	Washer Stainless steel M10	10
22	346110	Hex. bolt Stainless steel M12x80	3
23	311417	Washer Stainless steel M12	3
24	HSS860	M20 x 60 BOLT zinc pladed	4
25	WSR070	M20 Washer zinc pladed	8
26	LKN355	M20 Lock Nut zinc pladed	4
27	NIPP11	Ground Fixing Galvanised	1



FOUNDATION HOLE DETAILS
SECTION A-A

Rev	Description	Name	Check	Date

ASSEMBLY INSTRUCTIONS

1. Remove the cap 04 by undoing the bolts 15.
2. Separate the post segments from each other by undoing the nuts 19.
3. Attach the foot ring 02 to the post segment 08 using a connecting device 03, bolt 22 and washer 23.
4. Fix the seat 01 to post segment 07 with nut 19 and washer 21.
5. Fix the handhold 10 to post segment 05 with bolt 16 and washer 21.
6. Assemble all parts again.
7. Dig a hole 500x500 mm and 450 mm and depth 922 mm.
8. Place the structure in the hole. The bottom of the post should be at ground level so that the underside of the footing is 70 mm above ground level.
9. Make sure the equipment is placed upright and fill the hole with 0.125 m³ concrete. Fill up the rest with sand. Finish the hole with the removed soil.

TRIO TWISTER NIR020 (766009)

TÜV Product Service	Z2 07 05 11744 052
DIN	EN 1176-1:2003 EN 1176-5:2003
LNE	6030551-DPC/4

TECHNICAL INFORMATION

Part	Material	Standard colours
Top piece	Cast aluminium	Yellow RAL 1023
Ring	Steel	Red RAL 3020 (seats)
Fastenings	Stainless steel	Green RAL 6024
Finish	Polyester coating	

SHIPPING INFORMATION

- 1 Package NIR020 1.3x0.6x1.0m 65 kg
- 1 Package NIPP11 0.4x0.4x0.67 – 25 kg
- Total 90 kg**

MAINTENANCE ADVICE

- ▶ Check the equipment monthly for stability, security of fastenings and damage to paint work.
- ▶ Repair damaged paint work as soon as possible (abrade, degrease and paint).
- ▶ Once a year check the hub bearing for play. If there is any play contact Nijha for instructions.
- ▶ Clean metal parts at least once a year using soap and water.

07/08 version 1.0



PRODUCT INFORMATION